

# Windlicht "Reh"

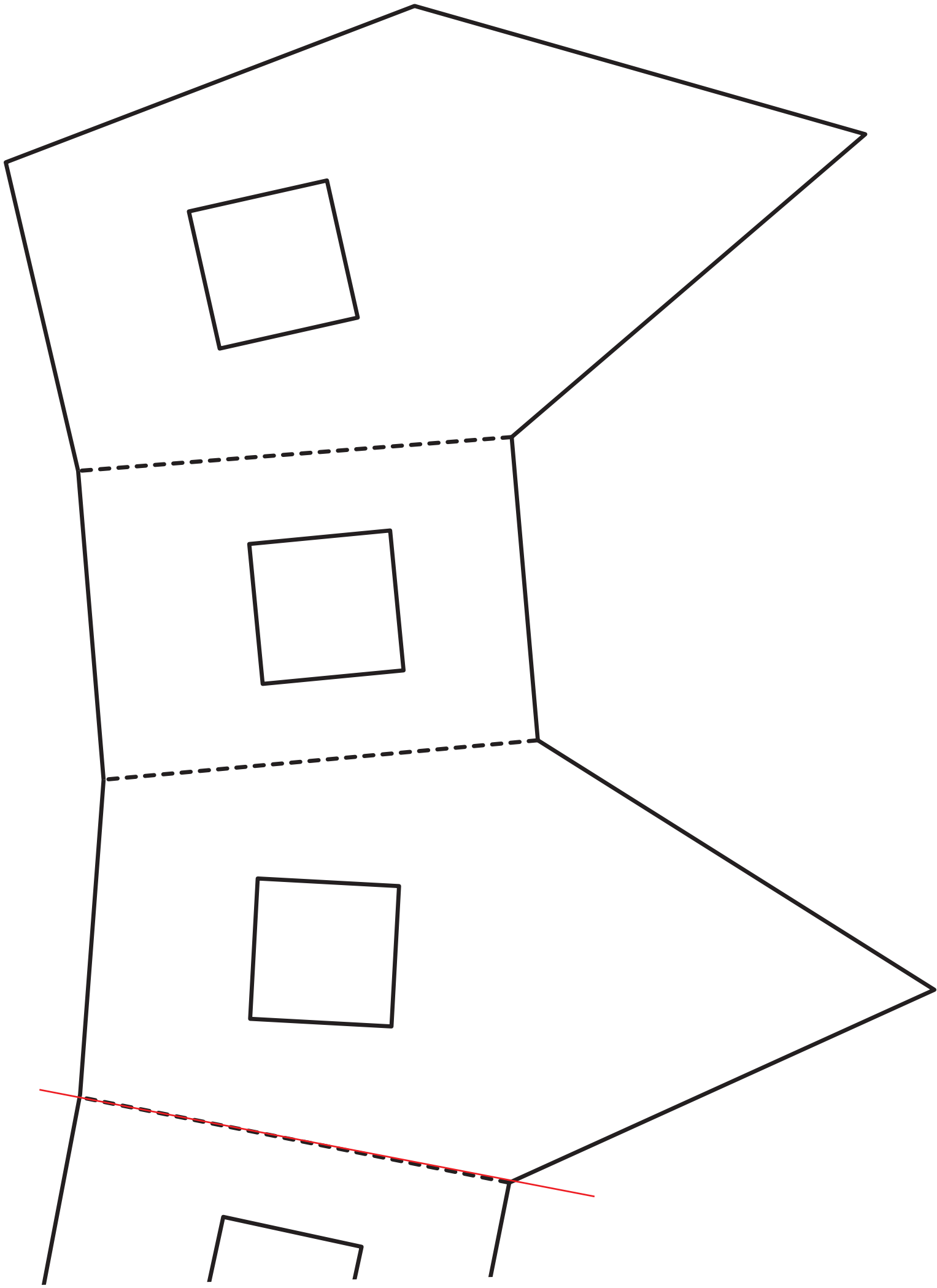


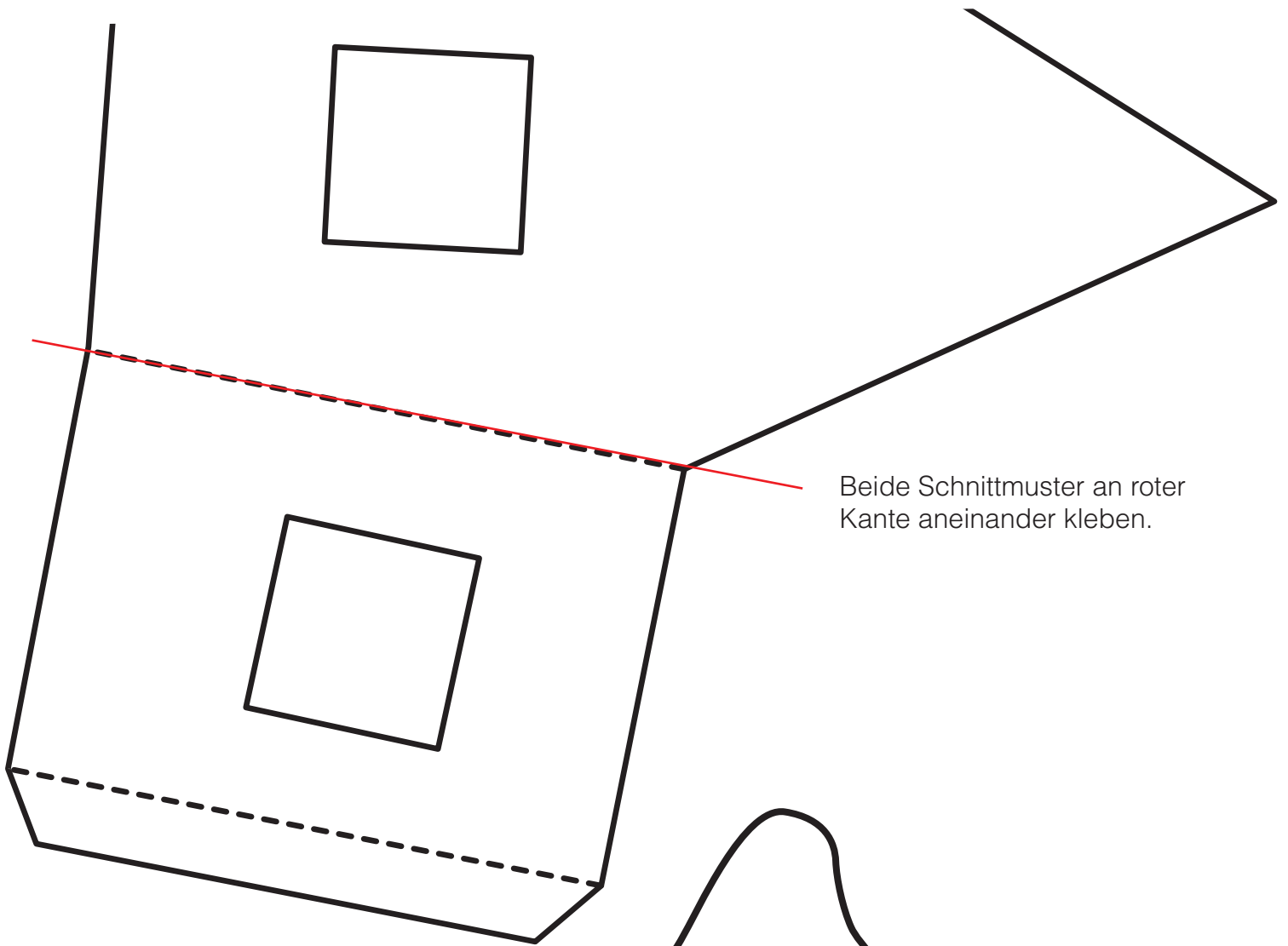
## Material:

- Art.-Nr. 1246 22 01 Fotokarton "Wintergarten", Motiv 01
- Art.-Nr. 5049 46 26 Transparentpapier "Uni", rosa
- Art.-Nr. 5640 00 52 Kreativ Accessoires, Motiv 52
- Art.-Nr. 5653 00 00 Klebepads, 2 mm

- Art.-Nr. 1921 00 00 Bastelschere
- Art.-Nr. 895 00 00 Bastelmesser
- Art.-Nr. 893 00 00 Lineal
- Art.-Nr. 1945 00 59 Motiv-Locher "maxi", Wellenlinie
- Art.-Nr. 1946 00 59 Motiv-Locher "jumbo", Wellenlinie

Bleistift





Beide Schnittmuster an roter Kante aneinander kleben.

